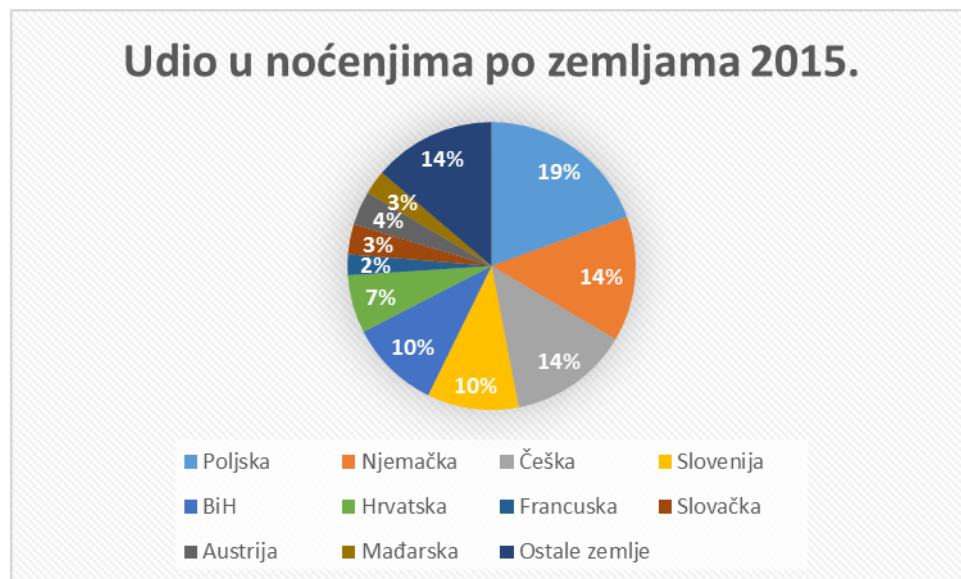


## Turistički promet po emitivnim zemljama

	2013.		2014.		2015.		indeks 15/14		udio noćenja u 2015
	dolasci	noćenja	dolasci	noćenja	dolasci	noćenja	dolasci	noćenja	
Poljska	20.847	167.788	19.562	161.588	18.240	152.307	93%	94%	19%
Njemačka	14.423	126.582	13.354	112.478	12.854	110.117	96%	98%	14%
Češka	14.535	122.130	13.499	115.526	12.289	105.487	91%	91%	13%
Slovenija	8.088	76.453	8.645	81.308	8.453	80.504	98%	99%	10%
BiH	7.402	61.922	8.571	69.231	9.891	79.755	115%	115%	10%
Hrvatska	5.871	51.610	6.234	50.761	6.476	51.096	104%	101%	7%
Francuska	4.843	39.927	6.111	46.884	3.305	18.261	54%	39%	2%
Slovačka	4.260	34.797	3.616	29.296	3.340	26.699	92%	91%	3%
Austrija	3.263	29.182	3.494	28.056	3.717	29.982	106%	107%	4%
Mađarska	2.498	18.676	2.715	20.456	2.747	20.940	101%	102%	3%
Ostale zemlje	15.756	111.689	15.633	103.776	17.170	107.940	110%	104%	14%
UKUPNO	101.786	840.756	101.434	819.360	98.482	783.088	97%	96%	100%

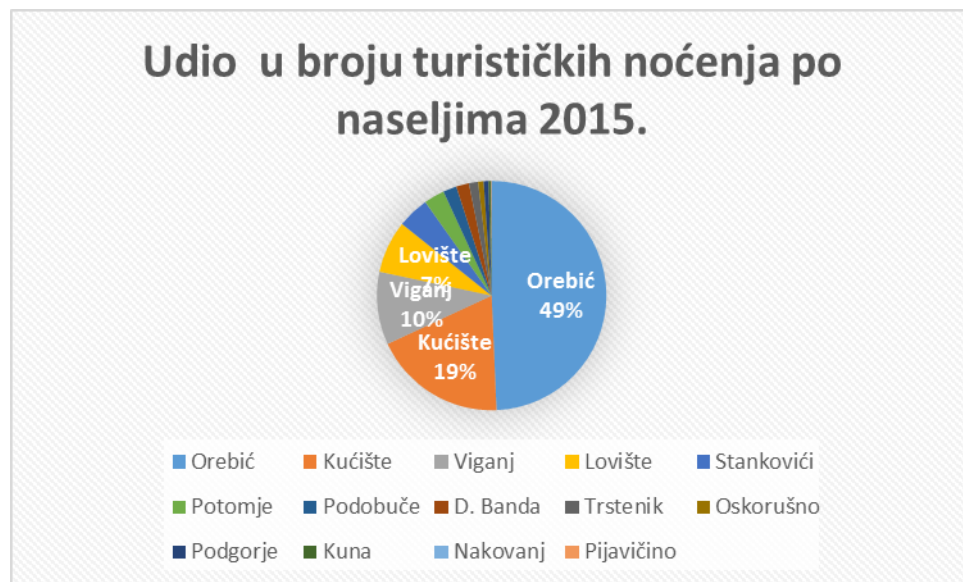
## Udio u noćenjima po zemljama



## Turistički promet po naseljima u općini Orebić

	2013.		2014.		2015.		indeks 15/14	
	dolasci	noćenja	dolasci	noćenja	dolasci	noćenja	dolasci	noćenja
Orebić	55.621	439.693	55.277	423.031	52.992	386.315	96%	91%
Kućište	18.321	153.162	18.761	149.219	17.923	146.839	96%	98%
Viganj	9.543	95.294	8.858	86.311	7.922	80.333	89%	93%
Lovište	5.848	49.604	6.065	54.286	6.296	57.911	104%	107%
Stankovići	4.687	32.925	4.411	32.372	4.812	34.872	109%	108%
Potomje	2.490	23.418	2.530	24.281	2.438	22.782	96%	94%
Podobuče	1.387	13.874	1.398	13.850	1.445	14.949	103%	108%
D. Banda	1.487	10.377	1.519	12.565	1.795	14.142	118%	113%
Trstenik	1.394	11.378	1.411	11.390	1.300	10.148	92%	89%
Oskorušno	471	5.146	469	5.451	540	6.053	115%	111%
Podgorje	174	2.018	400	3.107	681	5.414	170%	174%
Kuna	285	2.980	258	2.425	269	2.589	104%	107%
Nakovanj	0	0	0	0	0	0	0%	0%
Pijavičino	78	887	77	1.072	69	741	90%	69%
UKUPNO	101.786	840.756	101.434	819.360	98.482	783.088	97%	96%

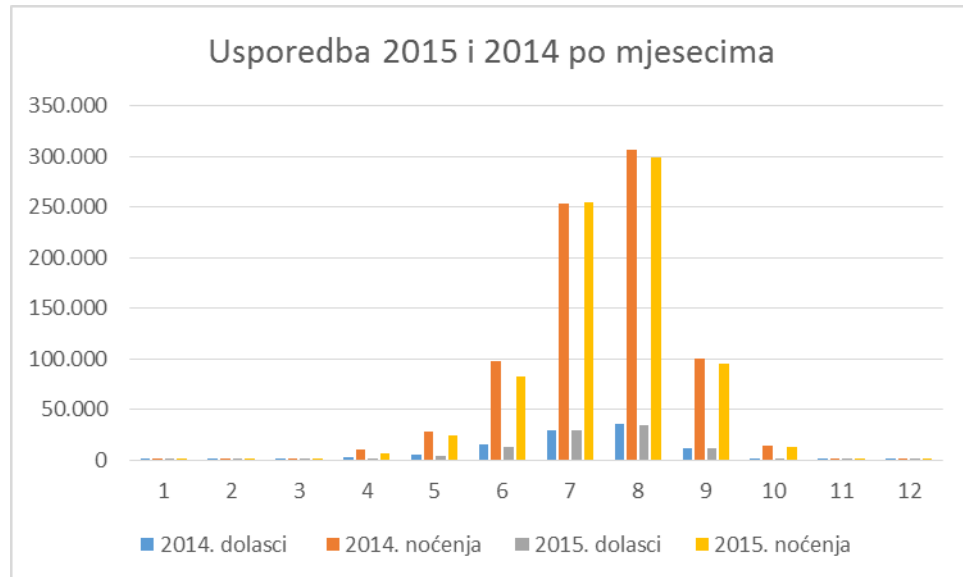
## Udio u broju turističkih noćenja po naseljima



## Noćenja i dolasci po mjesecima

	2013.		2014.		2015.		indeks 15/14	
	dolasci	noćenja	dolasci	noćenja	dolasci	noćenja	dolasci	noćenja
Siječanj	105	860	133	1.243	79	1.203	59%	97%
Veljača	98	996	103	895	105	1.014	102%	113%
Ožujak	252	2.043	212	1.754	300	1.735	142%	99%
Travanj	1.527	7.168	2.564	10.847	1.737	6.909	68%	64%
Svibanj	5.805	33.382	4.898	28.710	4.780	24.208	98%	84%
Lipanj	15.352	98.392	15.011	98.389	12.737	83.196	85%	85%
Srpanj	30.954	271.577	29.215	252.834	29.892	254.359	102%	101%
Kolovoz	33.682	303.207	35.582	306.476	34.762	298.678	98%	97%
Rujan	11.972	103.775	11.394	100.977	11.579	95.670	102%	95%
Listopad	1.779	15.843	2.012	14.267	2.113	13.195	105%	92%
Studeni	194	2.318	180	1.688	262	1.914	146%	113%
Prosinac	66	1.195	130	1.280	136	1.007	105%	79%
UKUPNO	101.786	840.756	101.434	819.360	98.482	783.088	97%	96%

## Usporedba dolazaka i noćenja 2015/14 po mjesecima



Turistički promet na području DNŽ 2014 i 2015

TZ	2014		2015		dolasci 15/14	noćenja 15/14
	dolasci	noćenja	dolasci	noćenja		
Tzg Dubrovnik	837.942	2.933.063	903.185	3.092.577	108%	105%
TZO Konavle	107.680	604.446	113.832	624.806	106%	103%
TZO župa Dubrovačka	82.345	384.266	97.468	449.085	118%	117%
TZO Dubrovačko Primorje	32.970	171.885	32.296	176.408	98%	103%
TZO Slivno	17.930	158.117	19.043	160.304	106%	101%
TZG Metković	3.551	8.427	4.444	9.025	125%	107%
TZG Opuzen	85	560	291	1.900	342%	339%
TZG Ploča	4.358	17.898	3.663	19.929	84%	111%
TZO Ston	25.740	133.803	27.270	142.253	106%	106%
TZO Janjina	8.387	75.256	9.667	84.557	115%	112%
TZO Trpanj	16.881	129.568	16.832	135.602	100%	105%
TZO Orebić	101.434	819.360	98.482	783.088	97%	96%
TZG Korčula	64.522	331.371	70.438	353.992	109%	107%
TZO Lumbarda	17.923	138.490	17.074	130.566	95%	94%
TZO Smokvica	6.690	46.420	7.430	48.841	111%	105%
TZO Blato	15.547	150.019	16.307	161.476	105%	108%
TZO Vela Luka	27.545	157.604	27.372	163.006	99%	103%
TZO Lastovo	5.428	42.189	6.227	46.358	115%	110%
TZO Mljet	20.168	98.670	21.066	102.991	104%	104%
UKUPNO	1.397.126	6.401.412	1.492.387	6.686.764	107%	104%