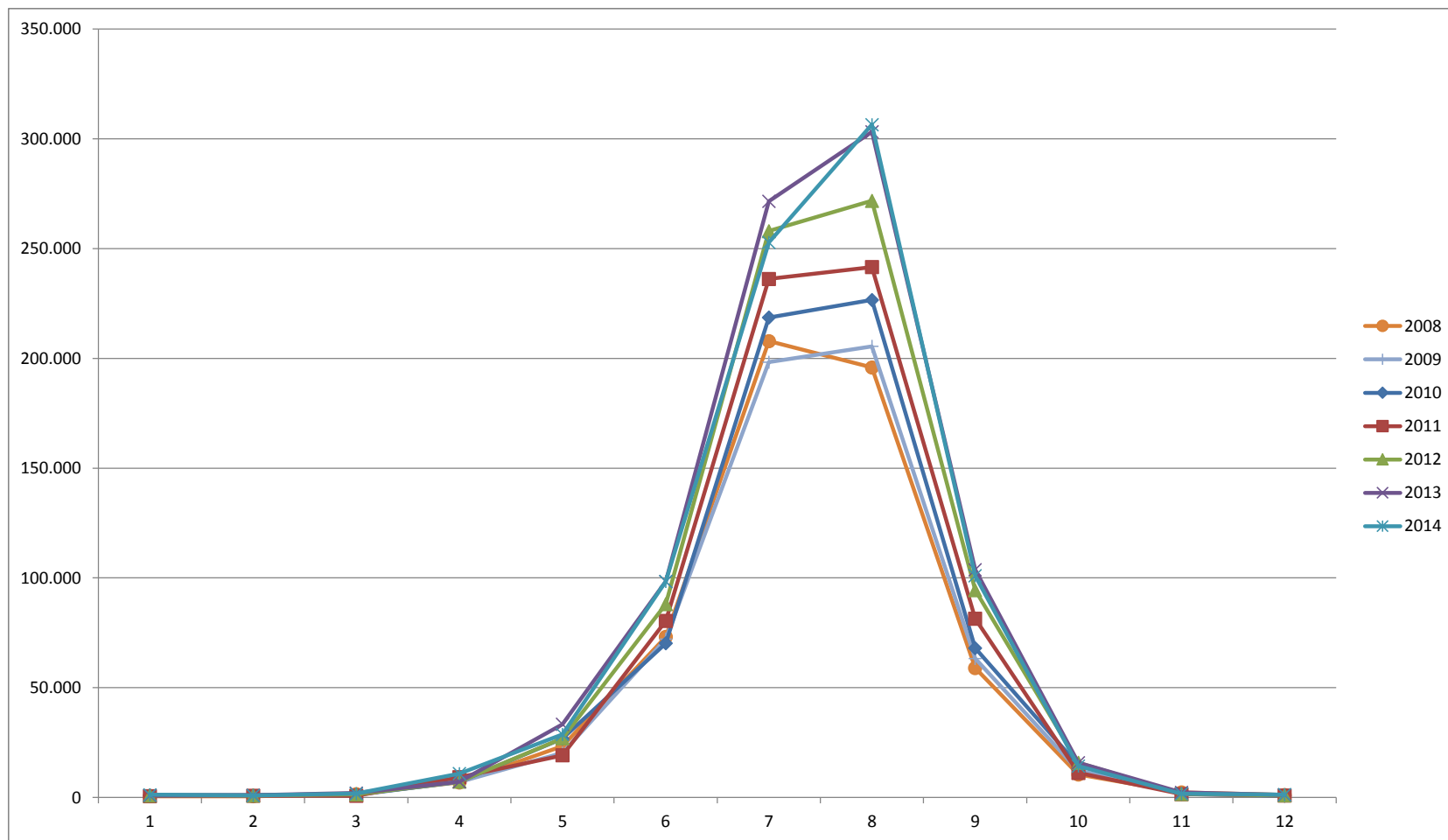


Tablica 1. Noćenja i dolasci 2008. do 2014.

	2008.		2009.		2010.		2011.		2012.		2013.		2014.		index 14/08 (kumulativ)	
	dolasci	noćenja	dolasci	noćenja	dolasci	noćenja	dolasci	noćenja	dolasci	noćenja	dolasci	noćenja	dolasci	noćenja	dolasci	noćenja
Siječanj	43	555	56	1.096	37	1.034	47	614	61	905	105	860	133	1.243	309,30%	223,96%
Veljača	45	587	40	1.122	44	930	49	786	44	856	98	996	103	895	228,89%	152,47%
Ožujak	237	1.542	95	1.365	105	1.160	72	802	156	1.430	252	2.043	212	1.754	89,45%	113,75%
Travanj	1.727	6.875	1.171	7.010	1.152	7.178	1.877	9.262	1.621	7.207	1.527	7.168	2.564	10.847	148,47%	157,77%
Svibanj	5.447	23.333	3.557	20.289	3.868	26.766	3.193	19.201	4.207	26.989	5.805	33.382	4.898	28.710	89,92%	123,04%
Lipanj	11.904	73.193	10.810	72.158	10.534	70.230	12.029	80.402	13.814	88.092	15.352	98.392	15.011	98.389	126,10%	134,42%
Srpanj	25.293	207.903	23.430	198.249	27.187	218.637	30.299	236.157	30.962	257.996	30.954	271.577	29.215	252.834	115,51%	121,61%
Kolovoz	23.007	195.904	24.813	205.499	26.315	226.649	27.341	241.601	29.479	271.776	33.682	303.207	35.582	306.476	154,66%	156,44%
Rujan	6.828	59.010	7.134	63.348	8.057	68.014	9.867	81.413	11.804	94.440	11.972	103.775	11.394	100.977	166,87%	171,12%
Listopad	1.214	10.450	1.345	12.214	1.751	14.739	1.347	11.201	1.783	15.843	1.779	15.843	2.012	14.267	165,73%	136,53%
Studeni	70	2.311	63	1.987	101	1.607	156	1.492	185	1.614	194	2.318	180	1.688	257,14%	73,04%
Prosinac	44	1.140	34	1.082	20	823	63	873	65	968	66	1.195	130	1.280	295,45%	112,28%
UKUPNO	75.859	582.803	72.548	585.419	79.171	637.767	86.340	683.804	94.181	768.116	101.786	840.756	101.434	819.360	133,71%	140,59%

	index 09/08		index 10/09		index 11/10		index 12/11		index 13/12		index 14/13		razlika 14-13		razlika 14-08	
	dolasci	noćenja	dolasci	noćenja	dolasci	noćenja	dolasci	noćenja	dolasci	noćenja	dolasci	noćenja	dolasci	noćenja	dolasci	noćenja
Siječanj	130,23%	197,48%	66,07%	94,34%	127,03%	59,38%	129,79%	147,39%	172,13%	95,03%	126,67%	144,53%	28	383	90	688
Veljača	88,89%	191,14%	110,00%	82,89%	111,36%	84,52%	89,80%	108,91%	222,73%	116,36%	105,10%	89,86%	5	-101	58	308
Ožujak	40,08%	88,52%	110,53%	84,98%	68,57%	69,14%	216,67%	178,30%	161,54%	142,87%	84,13%	85,85%	-40	-289	-25	212
Travanj	67,81%	101,96%	98,38%	102,40%	162,93%	129,03%	86,36%	77,81%	94,20%	99,46%	167,91%	151,33%	1.037	3.679	837	3.972
Svibanj	65,30%	86,95%	108,74%	131,92%	82,55%	71,74%	131,76%	140,56%	137,98%	123,69%	84,38%	86,00%	-907	-4.672	-549	5.377
Lipanj	90,81%	98,59%	97,45%	97,33%	114,19%	114,48%	114,84%	109,56%	111,13%	111,69%	97,78%	100,00%	-341	-3	3.107	25.196
Srpanj	92,63%	95,36%	116,03%	110,28%	111,45%	108,01%	102,19%	109,25%	99,97%	105,26%	94,38%	93,10%	-1.739	-18.743	3.922	44.931
Kolovoz	107,85%	104,90%	106,05%	110,29%	103,90%	106,60%	107,82%	112,49%	114,26%	111,57%	105,64%	101,08%	1.900	3.269	12.575	110.572
Rujan	104,48%	107,35%	112,94%	107,37%	122,46%	119,70%	119,63%	116,00%	101,42%	109,88%	95,17%	97,30%	-578	-2.798	4.566	41.967
Listopad	110,79%	116,88%	130,19%	120,67%	76,93%	76,00%	132,37%	141,44%	99,78%	100,00%	113,10%	90,05%	233	-1.576	798	3.817
Studeni	90,00%	85,98%	160,32%	80,88%	154,46%	92,84%	118,59%	108,18%	104,86%	143,62%	92,78%	72,82%	-14	-630	110	-623
Prosinac	77,27%	94,91%	58,82%	76,06%	315,00%	106,08%	103,17%	110,88%	101,54%	123,45%	196,97%	107,11%				
UKUPNO	95,64%	100,45%	109,13%	108,94%	109,06%	107,22%	109,08%	112,33%	108,07%	109,46%	99,65%	97,46%	-352	-21.396	25.575	236.557

Grafikon 1. Grafički prikaz noćenja 2008. - 2014.

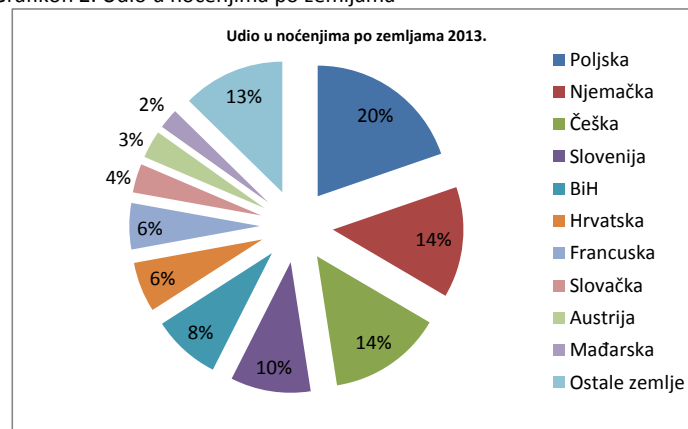


Tablica 2. Turistički promet po emitivnim zemljama

	2008.		udio 2008.	2009		udio 2009.	2010.		udio 2010	2011.		udio 2011.	2012.		udio 2012.
	dolasci	noćenja	noćenja	dolasci	noćenja	noćenja	dolasci	noćenja	noćenja	dolasci	noćenja	noćenja	dolasci	noćenja	noćenja
Poljska	10.220	85.614	14,62%	14.284	119.115	18,68%	16.176	134.814	21,14%	17.158	135.555	19,82%	18.761	152.158	19,81%
Njemačka	7.935	64.163	10,96%	8.599	68.560	10,75%	10.860	85.857	13,46%	11.296	93.651	13,70%	12.938	110.345	14,37%
Češka	10.707	93.596	15,99%	9.154	78.725	12,34%	10.252	86.799	13,61%	12.481	102.035	14,92%	13.573	114.594	14,92%
Slovenija	5.257	47.901	8,18%	4.547	40.920	6,42%	4.977	45.981	7,21%	5.865	52.873	7,73%	7.119	66.460	8,65%
BiH	6.799	55.585	9,49%	6.011	49.541	7,77%	6.665	53.968	8,46%	6.678	52.915	7,74%	7.046	55.672	7,25%
Hrvatska	5.084	34.078	5,82%	4.085	34.633	5,43%	4.455	36.318	5,69%	4.765	38.879	5,69%	4.946	44.531	5,80%
Francuska	4.341	32.574	5,56%	4.366	36.010	5,65%	5.481	46.883	7,35%	5.712	47.487	6,94%	4.948	40.990	5,34%
Slovačka	6.716	53.913	9,21%	4.888	37.984	5,96%	2.587	21.475	3,37%	4.024	31.915	4,67%	4.648	37.437	4,87%
Austrija	1.845	13.878	2,37%	2.023	15.128	2,37%	2.706	20.319	3,19%	2.731	22.442	3,28%	3.375	27.938	3,64%
Mađarska	3.316	23.157	3,96%	2.778	19.584	3,07%	2.548	18.174	2,85%	2.762	18.662	2,73%	2.561	18.891	2,46%
Ostale zemlje	13.639	78.344	13,38%	11.779	85.219	13,36%	12.464	87.179	13,67%	12.868	87.390	12,78%	14.266	99.100	12,90%
UKUPNO	75.859	582.803	100,00%	72.548	585.419	100,00%	79.171	637.767	100,00%	86.340	683.804	100,00%	94.181	768.116	100,00%

Grafikon 2. Udio u noćenjima po zemljama

	2013.		udio 2013.	2014.		udio 2014.	index	index
	dolasci	noćenja	noćenja	dolasci	noćenja	noćenja	14/08.	14/13
Poljska	20.847	167.788	19,96%	19.562	161.588	19,72%	195,98%	96,30%
Njemačka	14.423	126.582	15,06%	13.354	112.478	13,73%	197,28%	88,86%
Češka	14.535	122.130	14,53%	13.499	115.526	14,10%	130,49%	94,59%
Slovenija	8.088	76.453	9,09%	8.645	81.308	9,92%	159,61%	106,35%
BiH	7.402	61.922	7,37%	8.571	69.231	8,45%	111,40%	111,80%
Hrvatska	5.871	51.610	6,14%	6.234	50.761	6,20%	151,45%	98,35%
Francuska	4.843	39.927	4,75%	6.111	46.884	5,72%	122,57%	117,42%
Slovačka	4.260	34.797	4,14%	3.616	29.296	3,58%	64,54%	84,19%
Austrija	3.263	29.182	3,47%	3.494	28.056	3,42%	210,28%	96,14%
Mađarska	2.498	18.676	2,22%	2.715	20.456	2,50%	134,57%	109,53%
Ostale zemlje	15.756	111.689	13,28%	15.633	103.776	12,67%	80,65%	92,92%
UKUPNO	101.786	840.756	100,00%	101.434	819.360	100,00%	144,26%	97,46%



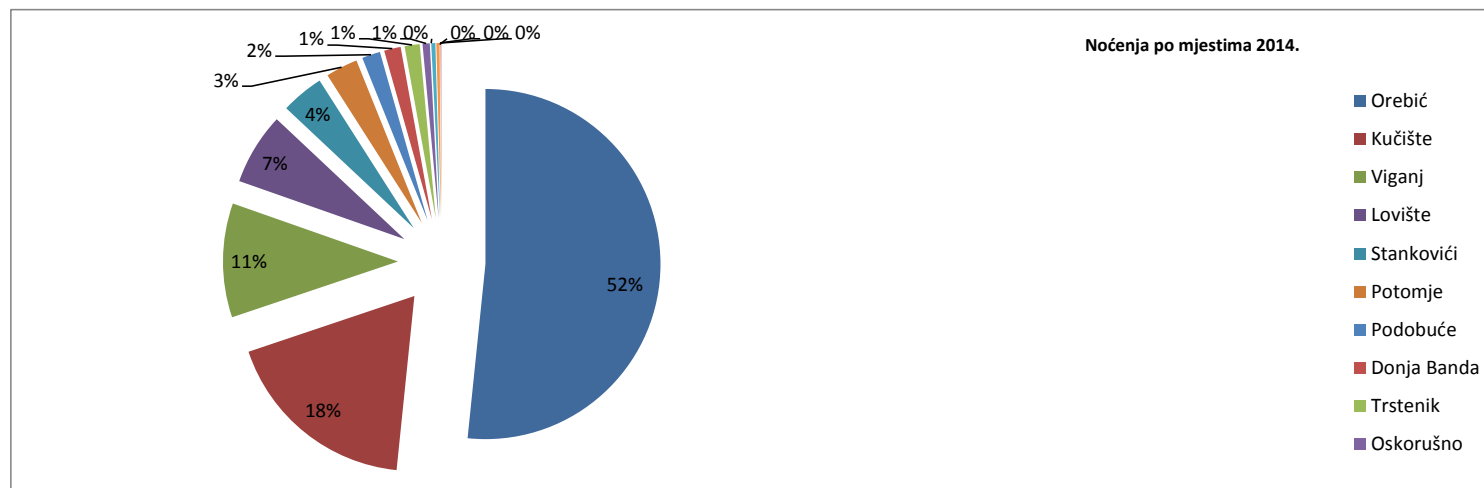
Tablica 3. Turistički promet po naseljima u općini Orebić

	2008.		2009.		2010.		2011.		2012.		2013.		2014.	
	dolasci	noćenja	dolasci	noćenja	dolasci	noćenja	dolasci	noćenja	dolasci	noćenja	dolasci	noćenja	dolasci	noćenja
Orebić	44.347	321.163	43.428	340.833	46.833	362.900	47.796	373.591	53.005	420.816	55.621	439.693	55.277	423.031
Kučište	16.246	125.043	13.507	109.851	11.819	102.356	16.020	121.976	17.490	142.465	18.321	153.162	18.761	149.219
Viganj	5.186	51.026	4.972	47.681	6.020	57.577	6.787	62.919	7.506	75.349	9.543	95.294	8.858	86.311
Lovište	2.180	19.506	2.463	19.009	3.040	23.620	3.646	29.450	4.733	36.160	5.848	49.604	6.065	54.286
Stanković	2.860	17.653	2.895	19.887	5.442	37.923	5.053	34.928	4.766	33.354	4.687	32.925	4.411	32.372
Potomje	1.926	21.472	2.041	19.650	1.935	18.226	2.282	21.434	2.250	21.012	2.490	23.418	2.530	24.281
Podobuće	650	6.784	732	7.567	856	8.725	1.028	9.937	1.223	12.526	1.387	13.874	1.398	13.850
Donja Bar	980	7.069	822	6.236	1.118	7.508	1.463	9.787	1.205	8.445	1.487	10.377	1.519	12.565
Trstenik	989	7.615	1.092	8.653	1.185	9.712	1.240	10.095	1.166	8.945	1.394	11.378	1.411	11.390
Oskorušne	314	3.577	401	4.369	415	4.646	465	4.794	441	5.071	471	5.146	469	5.451
Podgorje			0	0	222	1.660	273	2.109	177	1.727	174	2.018	400	3.107
Kuna	181	1.895	195	1.683	212	2.067	239	2.193	204	2.130	285	2.980	258	2.425
Nakovanj			0	0	61	665	41	434	0	0				
Pijavčino			0	0	13	182	7	157	15	116	78	887	77	1.072
UKUPNO	75.859	582.803	72.548	585.419	79.171	637.767	86.340	683.804	94.181	768.116	101.786	840.756	101.434	819.360

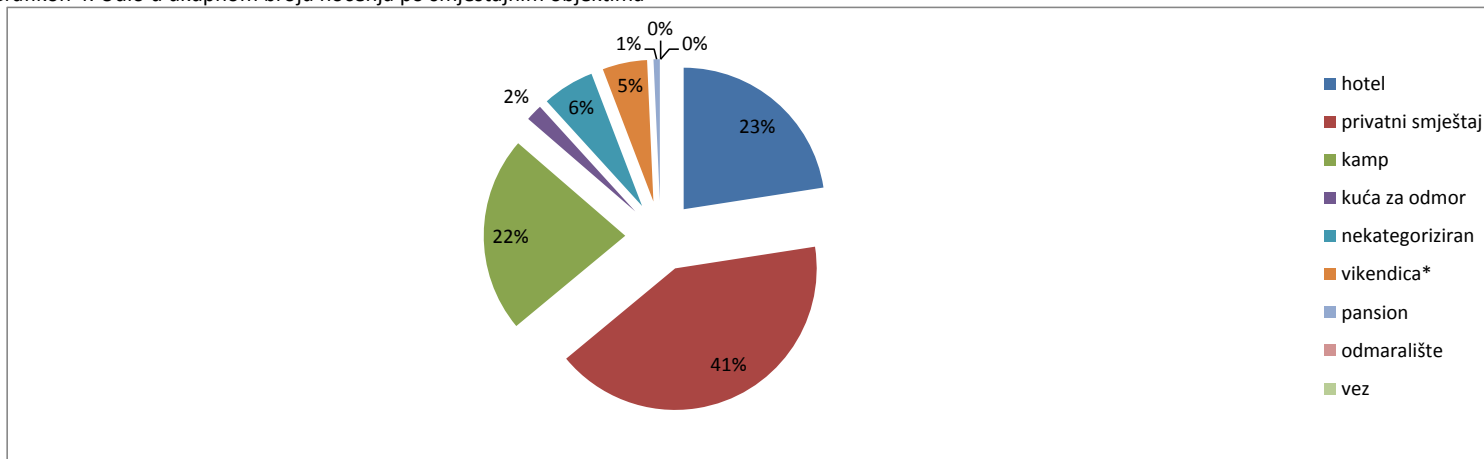
* izmjenama propisa u 2010. su uvedena nova naselja

	index 14/08		2014- 2008	udio noć.2008.	index 14/13		2014- 2013	udio noć.2014.
	dolasci	noćenja			dolasci	noćenja		
Orebić	125,42%	136,91%	16.662	55,11%	99,38%	96,21%	-16.662	51,63%
Kučište	112,77%	122,49%	3.943	21,46%	102,40%	97,43%	-3.943	18,21%
Viganj	184,01%	186,76%	8.983	8,76%	92,82%	90,57%	-8.983	10,53%
Lovište	268,26%	254,30%	-4.682	3,35%	103,71%	109,44%	4.682	6,63%
Stanković	163,88%	186,51%	553	3,03%	94,11%	98,32%	-553	3,95%
Potomje	129,28%	109,06%	-863	3,68%	101,61%	103,69%	863	2,96%
Podobuće	213,38%	204,51%	24	1,16%	100,79%	99,83%	-24	1,69%
Donja Bar	151,73%	146,80%	-2.188	1,21%	102,15%	121,09%	2.188	1,53%
Trstenik	140,95%	149,42%	-12	1,31%	101,22%	100,11%	12	1,39%
Oskorušne	150,00%	143,86%	-305	0,61%	99,58%	105,93%	305	0,67%
Podgorje	#DIV/0!	#DIV/0!	-1.089	0,00%	229,89%	153,96%	1.089	0,38%
Kuna	157,46%	157,26%	555	0,33%	90,53%	81,38%	-555	0,30%
Nakovanj	#DIV/0!	#DIV/0!	0	0,00%	#DIV/0!	#DIV/0!	0	0,00%
Pijavčino	#DIV/0!	#DIV/0!	-185	0,00%	98,72%	120,86%	185	0,13%
UKUPNO	134,18%	144,26%	21.396	100,00%	99,65%	97,46%	-21.396	100,00%

Grafikon 3. Udio u broju turističkih noćenja po naseljima 2014.



Grafikon 4. Udio u ukupnom broju noćenja po smještajnim objektima



Tablica 4. Turistički promet po smještajnim objektima

	2008.		udio u uk.br.noć.	2009.		udio u uk.br.noć.	2010.		udio u uk.br.noć.	2011.		udio u uk.br.noć.	2012.		udio u uk.br.noć.
	dolasci	noćenja		dolasci	noćenja		dolasci	noćenja		dolasci	noćenja		dolasci	noćenja	
hotel	30.409	205.441	35,25%	23.639	179.003	30,58%	23.428	174.284	27,33%	27.299	198.926	29,09%	29.241	209.260	27,24%
privatni smještaj	21.884	190.233	32,64%	25.224	224.421	38,34%	30.858	268.003	42,02%	33.052	276.315	40,41%	35.908	308.556	40,17%
kamp	16.689	115.720	19,86%	17.044	116.270	19,86%	17.058	115.144	18,05%	18.646	129.707	18,97%	21.481	164.705	21,44%
kuća za odmor	6.656	69.901	11,99%	5.904	60.792	10,38%	2.538	33.825	5,30%	411	4.547	0,66%	764	15.946	2,08%
nekategorizirani	0	0	0,00%	0	0	0,00%	4.440	41.083	6,44%	3.942	42.039	6,15%	3.929	42.052	5,47%
vikendica	-	-	#VALUE!	-	-	#VALUE!	-	-	#VALUE!	2.351	28.103	4,11%	2.219	23.038	3,00%
pansion	188	1.182	0,20%	728	4.817	0,82%	849	5.428	0,85%	639	4.167	0,61%	639	4.559	0,59%
odmaralište	31	312	0,05%	0	0	0,00%	0	0	0,00%	0	0	0,00%	0	0	0,00%
vez	2	14	0,00%	9	116	0,02%	0	0	0,00%	0	0	0,00%	0	0	0,00%
UKUPNO	75.859	582.803	100,00%	72.548	585.419	100,00%	79.171	637.767	100,00%	86.340	683.804	100,00%	94.181	768.116	100,00%

* vikendaši se izdvojeno od nekategoriziranog smještaja i kuća za odmor tablično prikazuju od 2011.

	2013.		udio u uk.br.noć.	2014.		udio u uk.br.noć.
	dolasci	noćenja		dolasci	noćenja	
hotel	29.227	208.784	24,83%	27.621	184.745	22,55%
privatni smještaj	38.869	332.176	39,51%	40.283	339.558	41,44%
kamp	24.837	200.299	23,82%	23.337	183.115	22,35%
kuća za odmor	940	17.739	2,11%	728	15.588	1,90%
nekategorizirani	4.614	49.416	5,88%	4.290	48.681	5,94%
vikendica	2.473	26.913	3,20%	4.124	41.811	5,10%
pansion	826	5.429	0,65%	1.051	5.862	0,72%
odmaralište			0,00%			0,00%
vez			0,00%			0,00%
UKUPNO	101.786	840.756	100,00%	101.434	819.360	100,00%

Tablica 5. Dani popunjenosti 2014.

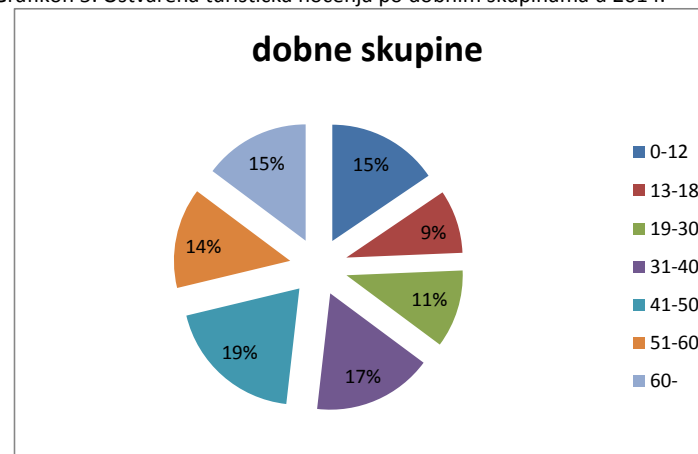
Naselje	broj dana
Orebić	57,72
Lovište	61,46
Viganj	70,61
Kučište	60,30
Stankovići	51,04
Donja Banda	53,20
Podobuće	71,95
Podgorje	44,75
Kuna	51,00
Potomje	79,31
Oskorušno	58,57
Trstenik	40,54
Pijavičino	0,00
Općina	59,64

Tablica 6. Turistički promet po dobnim skupinama

	2008.		udio u uk.br.noć.	2009.		udio u uk.br.noć.	2010.		udio u uk.br.noć.	2011.		udio u uk.br.noć.	2012.		udio u uk.br.noć.
	dolasci	noćenja		dolasci	noćenja		dolasci	noćenja		dolasci	noćenja		dolasci	noćenja	
0-12	7.963	66.293	11,37%	8.288	72.122	12,32%	9.473	80.355	12,60%	10.918	93.265	13,64%	13.058	115.569	15,05%
13-18	6.874	53.363	9,16%	6.260	52.854	9,03%	6.694	56.072	8,79%	7.111	58.793	8,60%	7.848	65.757	8,56%
19-30	11.484	86.906	14,91%	10.536	80.480	13,75%	10.782	81.289	12,75%	11.526	83.415	12,20%	11.540	85.479	11,13%
31-40	15.131	117.614	20,18%	14.138	108.981	18,62%	15.419	117.408	18,41%	16.074	120.830	17,67%	16.942	131.518	17,12%
41-50	14.738	115.056	19,74%	14.384	115.353	19,70%	15.590	123.399	19,35%	17.480	135.395	19,80%	18.653	150.584	19,60%
51-60	10.316	77.309	13,27%	10.417	81.226	13,87%	11.448	90.103	14,13%	12.730	97.421	14,25%	13.818	107.790	14,03%
60-	9.353	66.262	11,37%	8.525	74.403	12,71%	9.765	89.141	13,98%	10.501	94.685	13,85%	12.322	111.419	14,51%
UKUPNO	75.859	582.803	100,00%	72.548	585.419	100,00%	79.171	637.767	100,00%	86.340	683.804	100,00%	94.181	768.116	100,00%

	2013.		udio u uk.br.noć.	2014.		udio u uk.br.noć.	index 14/13	
	dolasci	noćenja		dolasci	noćenja		dolasci	noćenja
0-12	14.321	130.465	15,52%	14.825	130.028	15,87%	103,52%	99,67%
13-18	8.577	74.195	8,82%	8.734	71.136	8,68%	101,83%	95,88%
19-30	12.247	91.008	10,82%	11.736	85.536	10,44%	95,83%	93,99%
31-40	17.993	139.887	16,64%	17.258	132.304	16,15%	95,92%	94,58%
41-50	20.049	163.499	19,45%	19.926	160.186	19,55%	99,39%	97,97%
51-60	15.038	117.368	13,96%	15.076	115.657	14,12%	100,25%	98,54%
60-	13.561	124.334	14,79%	13.879	124.513	15,20%	102,34%	100,14%
UKUPNO	101.786	840.756	100,00%	101.434	819.360	100,00%	99,65%	97,46%

Grafikon 5. Ostvarena turistička noćenja po dobnim skupinama u 2014.



Turistički promet TZO Orebić 2008. -2014.

Tablica 7. Turistički promet na području DNŽ 2008.-2014.

TZ	2008.	Udio u uk. prometu	2009.	Udio u uk. prometu	2010.	Udio u uk. prometu	2011.	Udio u uk. prometu	2012.	Udio u uk. prometu	2013.	Udio u uk. prometu	2014.	Udio u uk. prometu	index 14/13	index 14/08
TZO Dubrovnik	1.796.068	39,20%	1.932.330	42,24%	2.068.676	42,38%	2.218.579	43,14%	2.498.730	43,56%	2.702.196	44,07%	2.933.063	45,82%	108,54%	163,30%
TZO Orebić	582.803	12,72%	585.419	12,80%	637.767	13,06%	683.804	13,30%	768.116	13,39%	840.756	13,71%	819.360	12,80%	97,46%	140,59%
TZO Konavle	486.778	10,62%	456.607	9,98%	479.875	9,83%	486.970	9,47%	549.014	9,57%	587.202	9,58%	604.446	9,44%	102,94%	124,17%
TZO Župa Dbk	333.432	7,28%	290.339	6,35%	315.251	6,46%	323.311	6,29%	358.094	6,24%	385.747	6,29%	384.266	6,00%	99,62%	115,25%
TZG Korčula	363.625	7,94%	337.445	7,38%	297.099	6,09%	299.216	5,82%	334.168	5,83%	335.622	5,47%	331.371	5,18%	98,73%	91,13%
TZO Slivno	61.266	1,34%	57.188	1,25%	67.012	1,37%	146.532	2,85%	149.476	2,61%	157.604	2,57%	158.117	2,47%	100,33%	258,08%
TZ Vela Luka	132.147	2,88%	117.121	2,56%	128.889	2,64%	133.156	2,59%	119.378	2,08%	143.634	2,34%	157.604	2,46%	109,73%	119,26%
TZO Dbk primorje	95.328	2,08%	104.631	2,29%	128.632	2,64%	132.913	2,58%	165.282	2,88%	168.667	2,75%	171.735	2,68%	101,82%	180,15%
TZO Lumbarda	130.101	2,84%	120.541	2,63%	123.443	2,53%	124.985	2,43%	144.505	2,52%	143.640	2,34%	138.490	2,16%	96,41%	106,45%
TZO Trpanj	97.795	2,13%	90.401	1,98%	115.564	2,37%	120.513	2,34%	135.120	2,36%	127.640	2,08%	129.568	2,02%	101,51%	132,49%
TZO Blato	88.172	1,92%	104.463	2,28%	112.576	2,31%	118.332	2,30%	131.928	2,30%	141.238	2,30%	149.797	2,34%	106,06%	169,89%
TZO Ston	77.757	1,70%	75.668	1,65%	120.192	2,46%	117.058	2,28%	126.734	2,21%	137.344	2,24%	133.803	2,09%	97,42%	172,08%
TZO Mljet	23.930	0,52%	25.145	0,55%	79.098	1,62%	78.854	1,53%	85.720	1,49%	91.653	1,49%	98.670	1,54%	107,66%	412,33%
TZO Janjina	54.616	1,19%	55.665	1,22%	56.416	1,16%	60.367	1,17%	67.724	1,18%	70.030	1,14%	75.256	1,18%	107,46%	137,79%
TZO Lastovo	50.712	1,11%	41.988	0,92%	43.867	0,90%	44.665	0,87%	41.978	0,73%	40.359	0,66%	42.189	0,66%	104,53%	83,19%
TZO Smokvica	34.574	0,75%	31.943	0,70%	35.605	0,73%	35.933	0,70%	40.207	0,70%	47.445	0,77%	46.420	0,73%	97,84%	134,26%
TZG Ploče	6190	0,14%	4494	0,10%	6136	0,13%	12248	0,24%	11.727	0,20%	11.266	0,18%	17.898	0,28%	158,87%	289,14%
TZG Metković	13.294	0,29%	12.844	0,28%	8.665	0,18%	5.373	0,10%	5.659	0,10%	0	0,00%	8.427	0,13%	#DIV/0!	63,39%
TZG Opuzen	1842	0,04%	631	0,01%	0	0,00%	147	0,00%	2.838	0,05%	0	0,00%	560	0,01%	#DIV/0!	30,40%
TZM Žuljana	31.622	0,69%	30.196	0,66%	0	0,00%	0	0,00%	0	0,00%	0	0,00%	0	0,00%	#DIV/0!	0,00%
TZM Klek	64.033	1,40%	50.009	1,09%	56.810	1,16%	0	0,00%	0	0,00%	0	0,00%	0	0,00%	#DIV/0!	0,00%
TZM Goveđari	55.649	1,21%	49.877	1,09%	0	0,00%	0	0,00%	0	0,00%	0	0,00%	0	0,00%	#DIV/0!	0,00%
Ukupno	4.581.734	100,00%	4.574.945	100,00%	4.881.573	100,00%	5.142.956	100,00%	5.736.398	100,00%	6.132.043	100,00%	6.401.040	100,00%	104,39%	139,71%

Podaci TZ DNŽ do 31.12.2014. (osim za Orebić)

*TZO Mljet (od 2009. dodani podaci TZM Goveđari), TZO Slivno (2009. - TZM Klek), TZO Ston (2009. - TZM Žuljana)